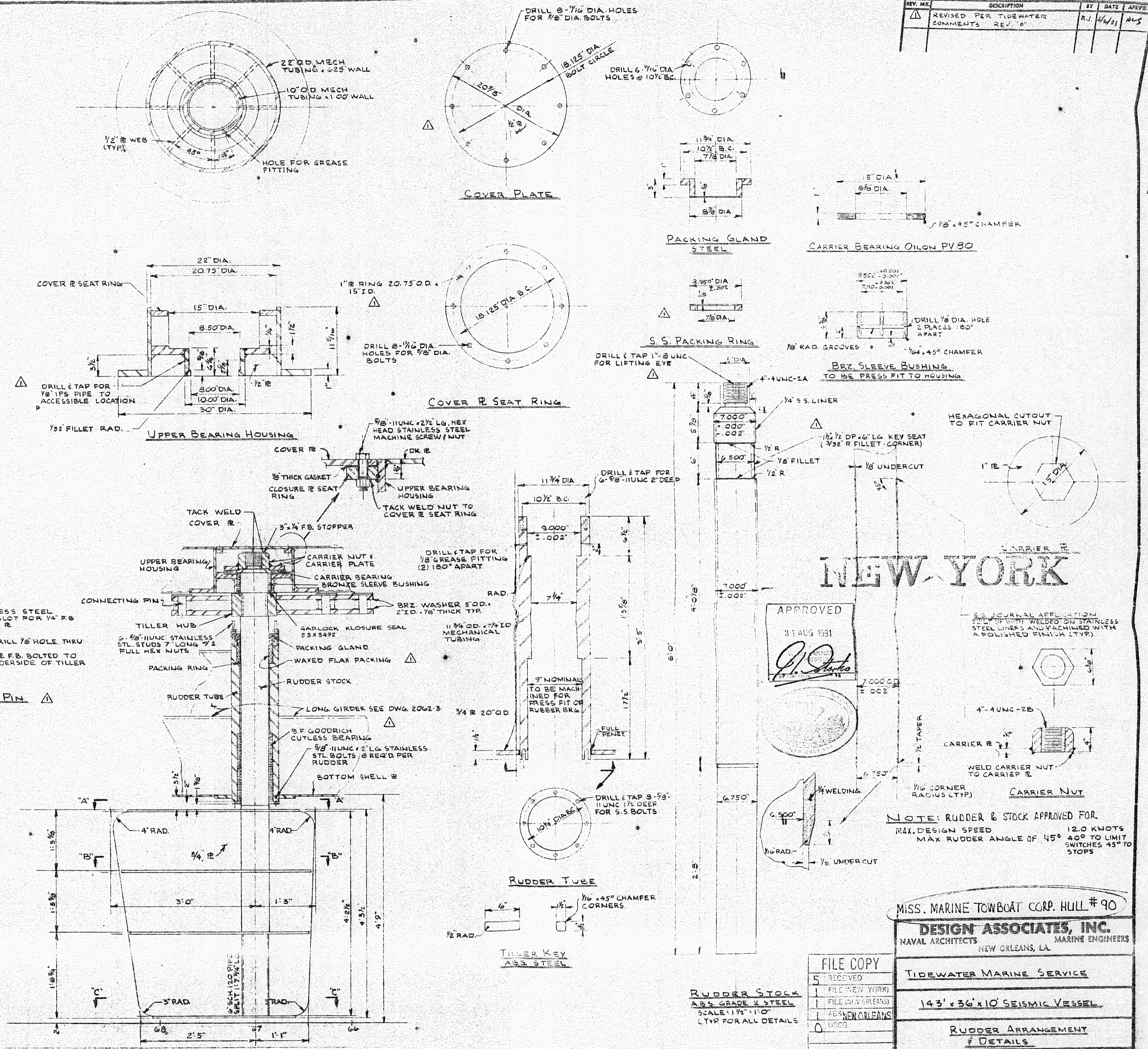
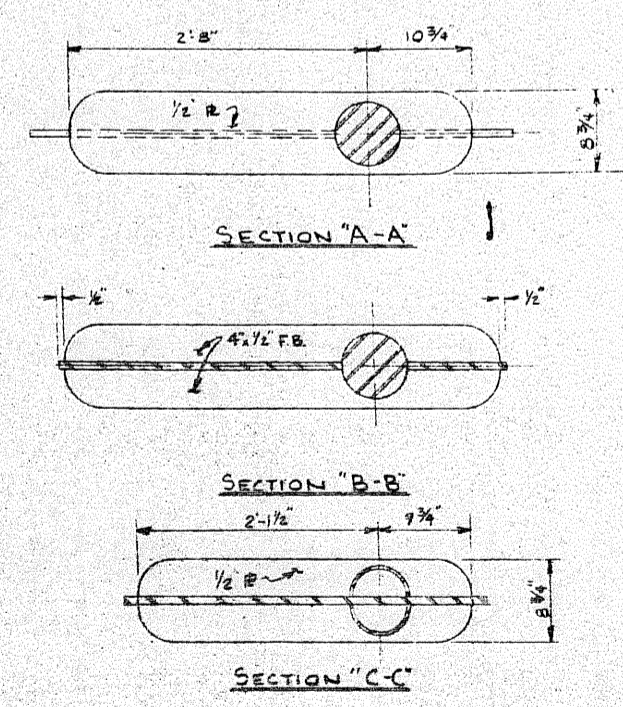
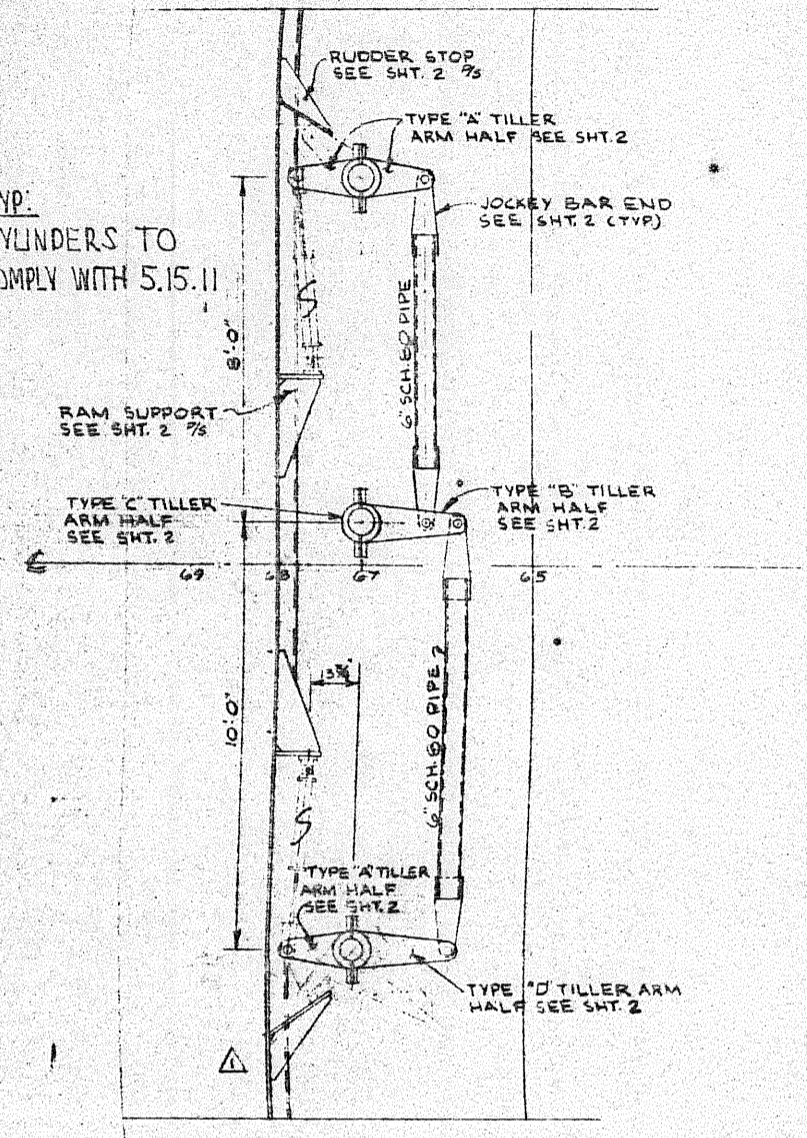


REV. NO.	DESCRIPTION	BY	DATE	APPROV.
1	REVISED PER TIDEWATER COMMENTS REV. 0	R.J.	4/6/81	AL-S

TYP. CYLINDERS TO COMPLY WITH S.15.11



APPROVED
31 AUG 1981
[Signature]

MISS. MARINE TOWBOAT CORP. HULL # 90	
DESIGN ASSOCIATES, INC. NAVAL ARCHITECTS NEW ORLEANS, LA.	MARINE ENGINEERS
TIDEWATER MARINE SERVICE	
143' x 36' x 10' SEISMIC VESSEL	
RUDDER ARRANGEMENT # DETAILS	
Drawn: <i>[Signature]</i>	Checkd: <i>[Signature]</i>
Traced: <i>[Signature]</i>	Drawn: <i>[Signature]</i>
Approved: <i>[Signature]</i>	Scale: LISTED
Sheet 1 of 2	Drawing No. C-2062-11 Revision Mark

FILE COPY
5 RECEIVED
1 FILE (NEW YORK)
1 FILE (NEW ORLEANS)
1 FILE (NEW ORLEANS)
0 MISG.